



Parrin Lane, Manchester

£1,600 PCM

Situated in a popular and well-connected residential area, this well-presented family home offers generous and flexible living accommodation arranged over three floors.

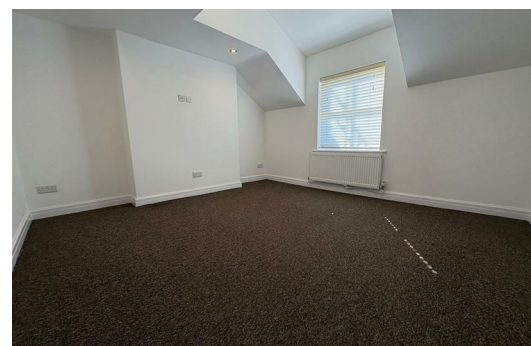
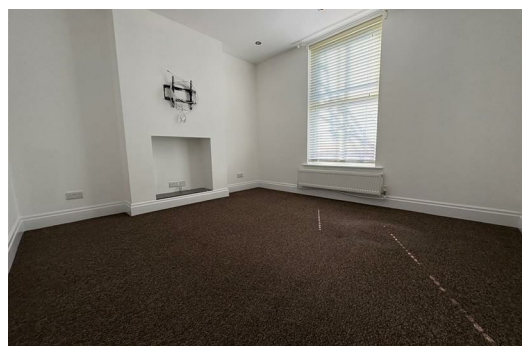
The property comprises four good-sized bedrooms, with an additional room located in the converted loft, ideal for a home office. To the front is a comfortable living room, while to the rear sits a spacious open-plan kitchen and dining area, perfect for modern family living and entertaining. French patio doors lead out to a private rear courtyard, providing a low-maintenance outdoor space.

The home benefits from a modern family bathroom, a convenient downstairs WC, and a private parking space to the rear.

Located within easy reach of local shops, amenities and well-regarded schools, the property also offers excellent transport links into Manchester city centre and surrounding areas, making it ideal for commuters and families alike.

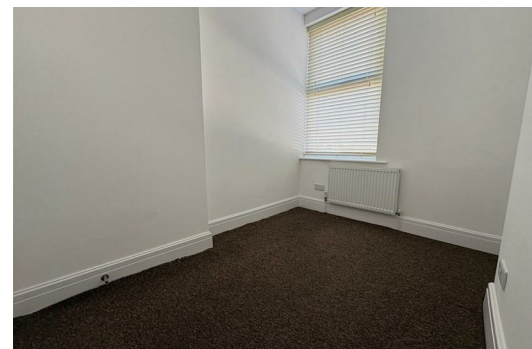
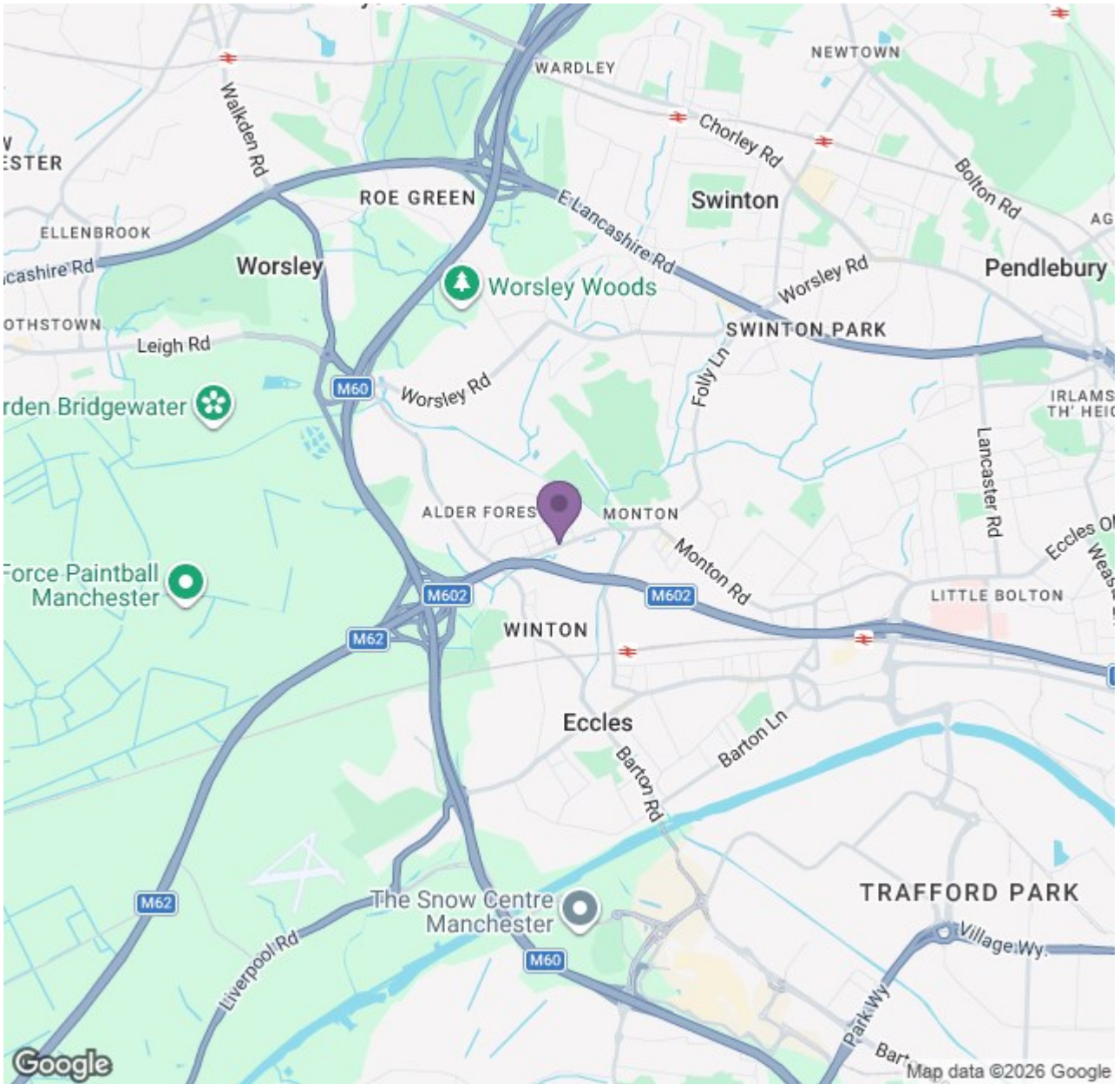
A fantastic opportunity to rent a spacious and versatile home in a sought-after location.

Available Now
Deposit: £1,840
Council Tax Band: B
Unfurnished



Ascend

Built on higher standards



Energy Efficiency Rating		Environmental Impact (CO ₂) Rating	
Current	Potential	Current	Potential
Energy 21	Energy 21	Impact 21	Impact 21
Energy 22	Energy 22	Impact 22	Impact 22
Energy 23	Energy 23	Impact 23	Impact 23
Energy 24	Energy 24	Impact 24	Impact 24
Energy 25	Energy 25	Impact 25	Impact 25
Energy 26	Energy 26	Impact 26	Impact 26
Energy 27	Energy 27	Impact 27	Impact 27
Energy 28	Energy 28	Impact 28	Impact 28
Energy 29	Energy 29	Impact 29	Impact 29
Energy 30	Energy 30	Impact 30	Impact 30

Ascend

Built on higher standards